

Act to Adapt

Under Hamdon Parishes

Supporting communities across Somerset to adapt to climate change through a series of collaborative events



Photo © Jim Champion (cc-by-sa/2.0)

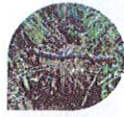
Shaping a plan for your community

Share your ideas for how the Under Hamdon Parishes of Ash, Martock, Kingsbury Episcopi, South Petherton, and Stoke Sub Hamdon can adapt to Climate Change!

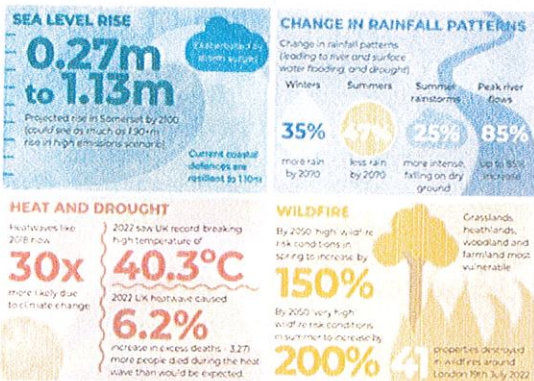
What is Adaptation?

Adjusting to the current impacts of climate change or planning for those that are projected.

Adaptation can seek to limit or avoid harm, or explore beneficial opportunities.



Why do we need to Adapt?



The process



Talk



Shape



Act

A workshop to bring local people together to talk about areas at risk from climate change impacts and potential solutions to adapt.

This is a community-wide effort — every voice and idea is valuable to feed into a Climate Adaptation Plan.

Through online and in-person opportunities, residents will get a chance to provide feedback and suggest other actions to be included in the climate adaptation plan.

This will ensure the plan is shaped by local voices and knowledge.

The Climate Adaptation Plan will be launched with an event, bringing residents together to act and implement as many adaptations as possible!

The plan will:

- Guide future action
- Help to track progress
- Offer advice



Somerset
Wildlife Trust

SCAN ME TO
LEAVE FEEDBACK
ONLINE



Team
Wilder

Funded by
Somerset
Rivers Authority



1 - Improving and increasing green spaces

Actions

1.1 - Identify and protect existing trees through Tree Protection Orders

1.2 - Implement tree planting strategies

1.3 - Establish community-managed green spaces

1.4 - Promote climate resilience management of green spaces

1.5 - Create wildlife-friendly areas in churchyards



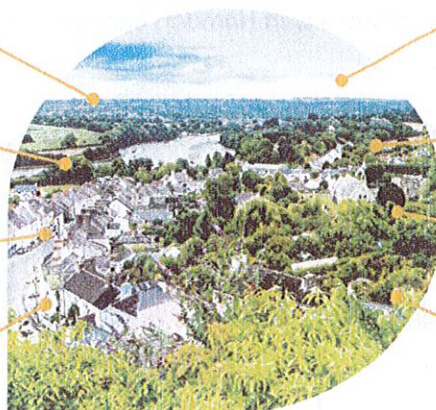
Benefits

Mitigates urban heat island effect

Provides shade and refuge

Improves water quality

Benefits health and wellbeing



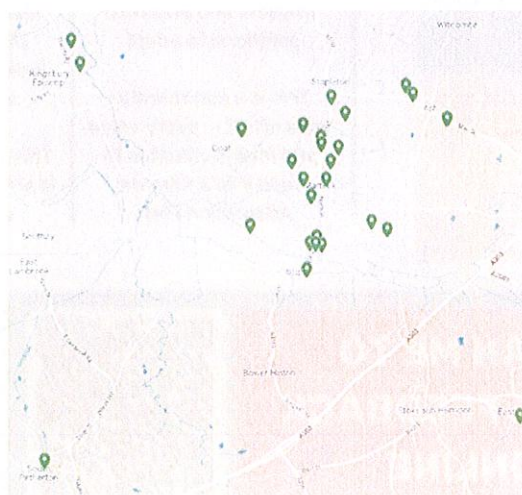
Captures and holds water above and below ground

Reduces stormwater runoff

Provides habitat for wildlife

Mitigates climate change

Locations





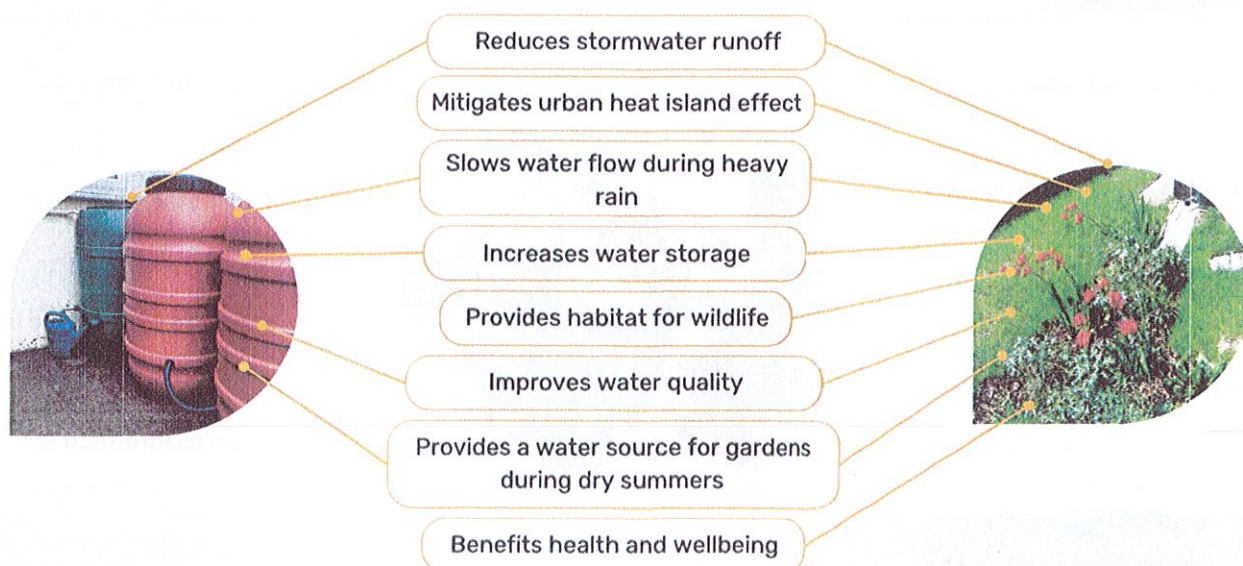
2 - Adapting to flooding

Actions

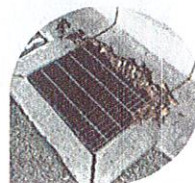
- 2.1 - Promote and strengthen community flood response**
- 2.2 - Maintain drains, gullies and watercourses**
- 2.3 - Implement rainwater collection and sustainable drainage systems**
- 2.4 - Support vulnerable residents during flood events**
- 2.5 - Coordinate parish-wide flood management**



Benefits



Possible projects





3 - Building local climate knowledge and action

Actions

- 3.1 - Partner with educational institutions**
- 3.2 - Form climate action groups across connected villages**
- 3.3 - Create networks for sharing local environmental best practices**
- 3.4 - Support vulnerable groups through community skill-sharing**



Benefits

Raises climate awareness

Motivates sustainable actions

Supports green economy

Enables youth leadership



Builds community collaboration

Facilitates open dialogues

Supports sustainable living

Enables informed choices

Possible projects

Here are some ideas for projects suggested by local residents:



Identify the most vulnerable groups and plan support strategies



'Cool place' similar to community hubs providing a 'warm place' in winter



Run a competition to fund and promote environmental champions



Set up a community climate action group



4 - Influencing local planning and development

Actions

- 4.1 - Improve existing housing**
- 4.2 - Lobby for climate-resilient new developments**
- 4.3 - Integrate climate adaptation into Neighbourhood Plans**
- 4.4 - Engage with parish councils on climate resilience policies**
- 4.5 - Coordinate with landowners and agencies on adaptation measures**



Benefits

Enhances climate resilience

Fosters collaboration

Facilitates communication

Involves the community



Supports sustainable living

Reduces heatwave impacts

Reduces flooding risks

Promotes environmental stewardship

Possible projects

Here are some ideas for projects suggested by local residents:



Ensure current and potential planning/development embeds adaptation



Engage agencies and community groups



New builds - Solar panels, SuDS (Permeable paving), swift boxes, better soil in gardens



Collaborate with landowners on adaptation

Locations

